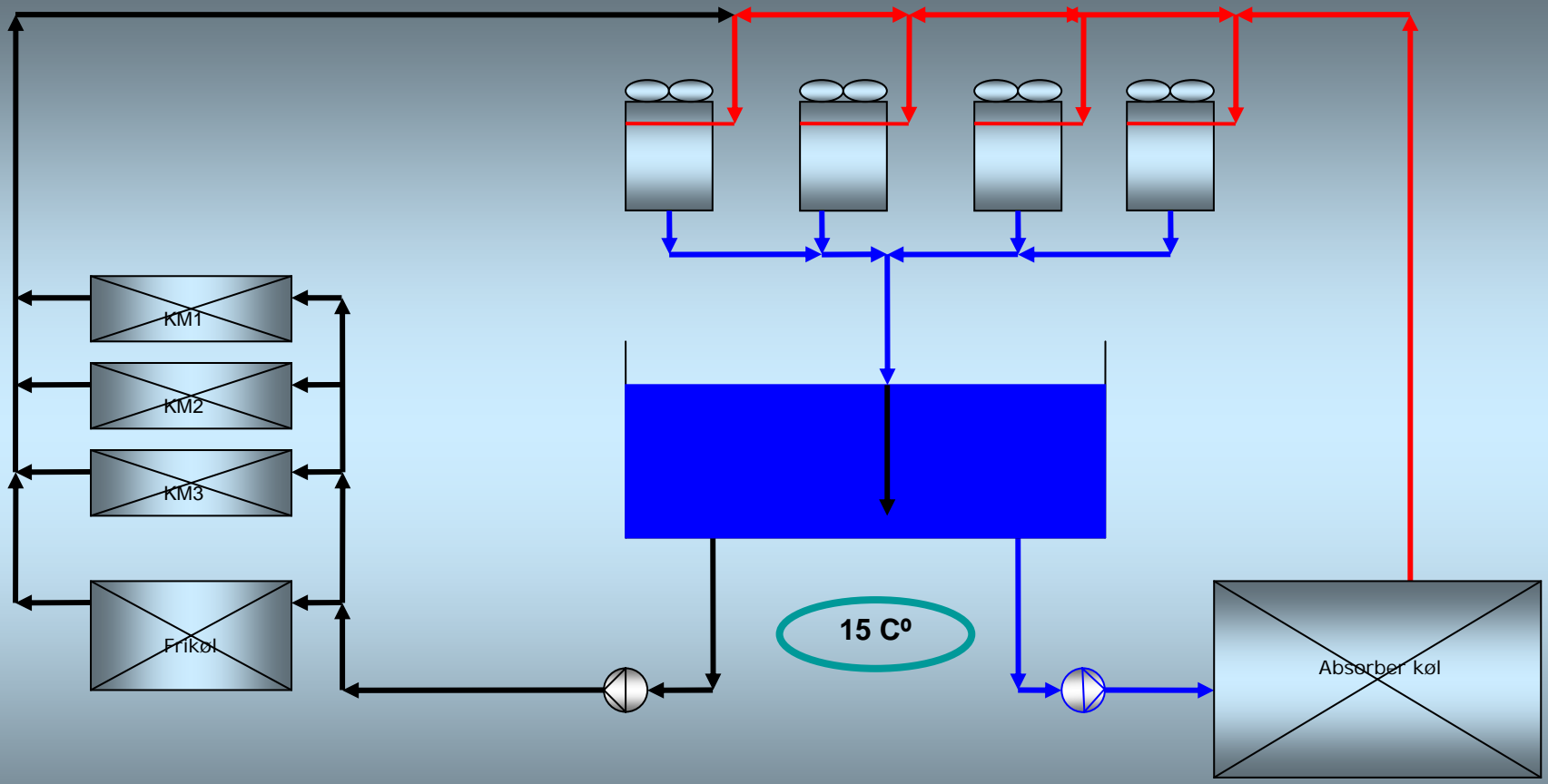




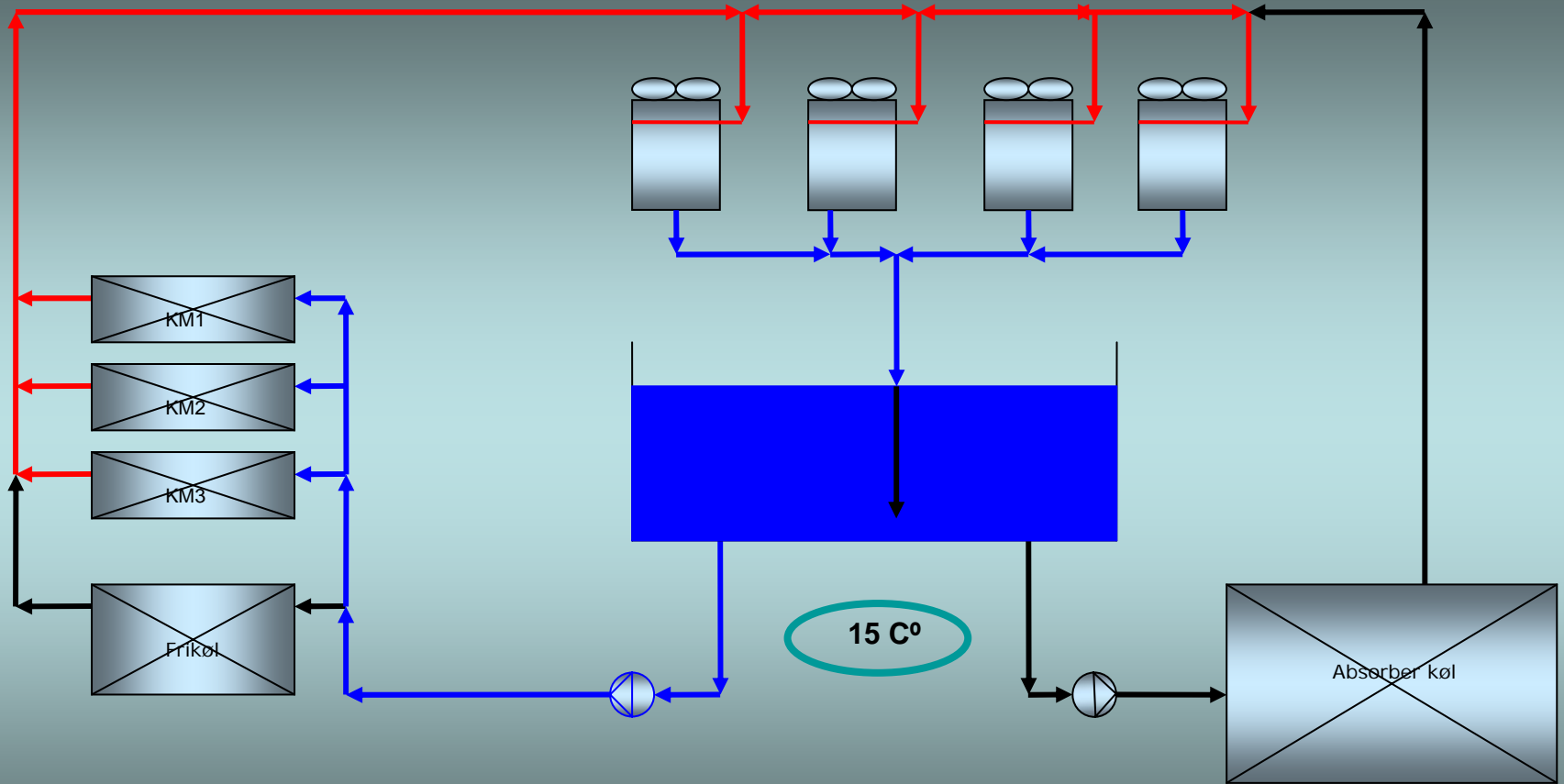
Kølekapacitet Chr. Hansen Hørsholm

- Frikøling: 400 kW
- Kølemaskine KM1: 619 kW
- Kølemaskine KM2: 650 kW
- Absorber køling: 1.400 kW

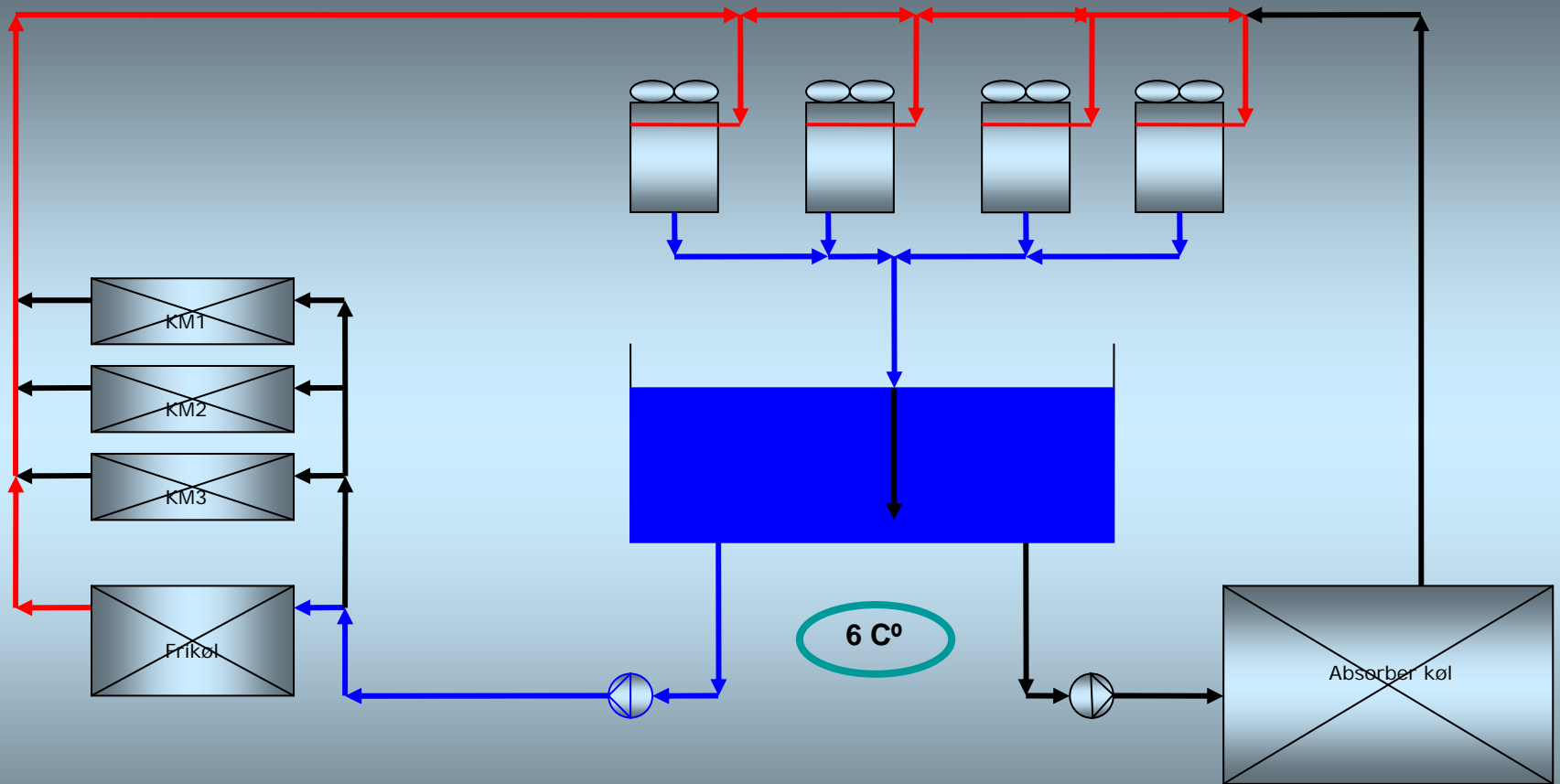
Absorber kjøling



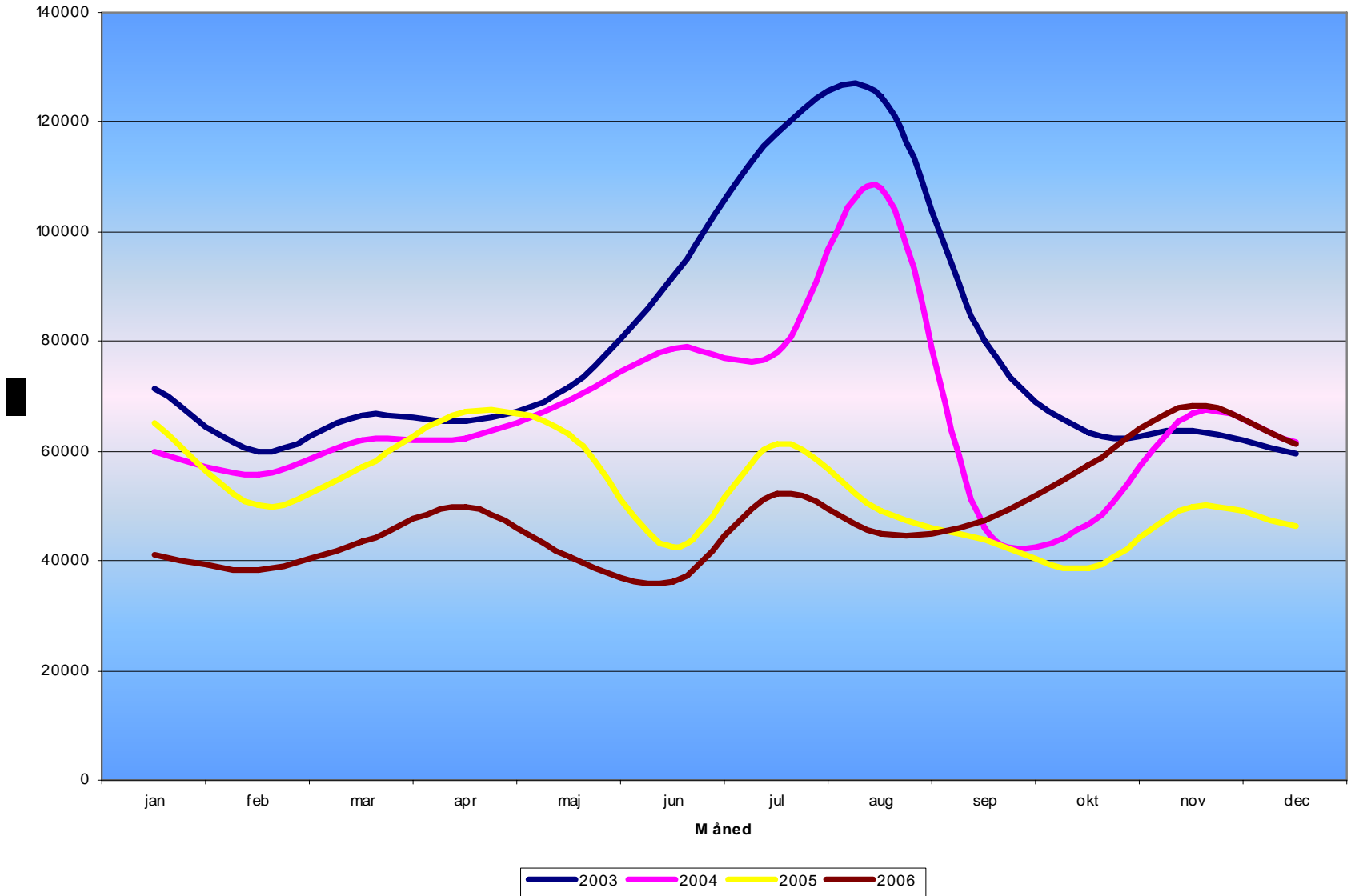
Kompressor kjøling



Fri kjøling

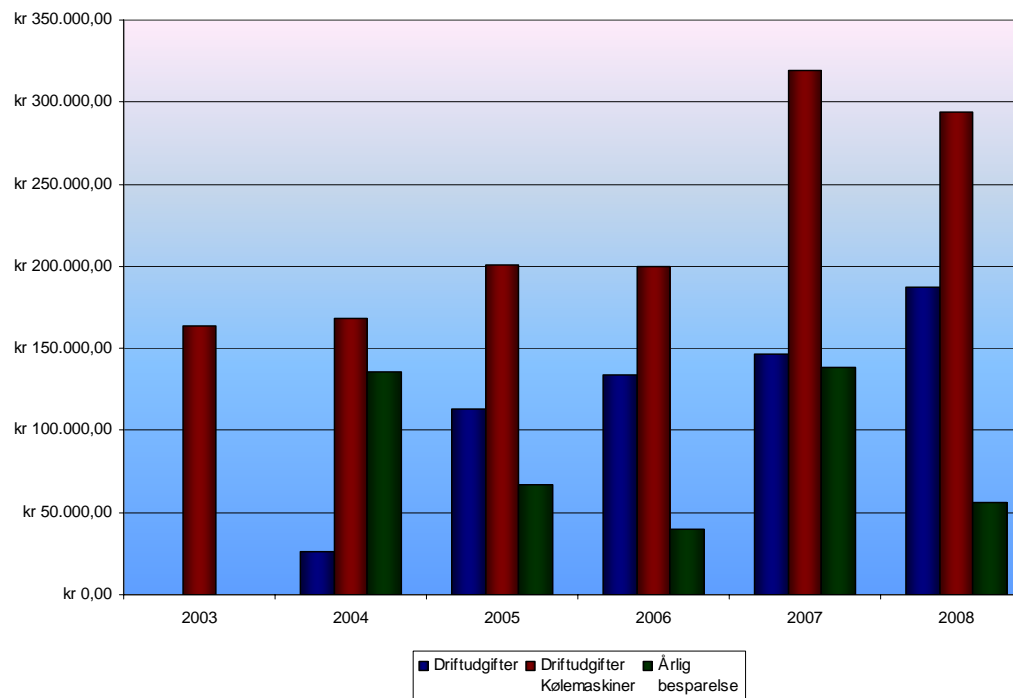


Elforbrug



Driftudgifter

Investering
Kr. 2.027.090
Besparelse efter 5 år
Kr. 438.203
Tilbagebetalings tid
23 år



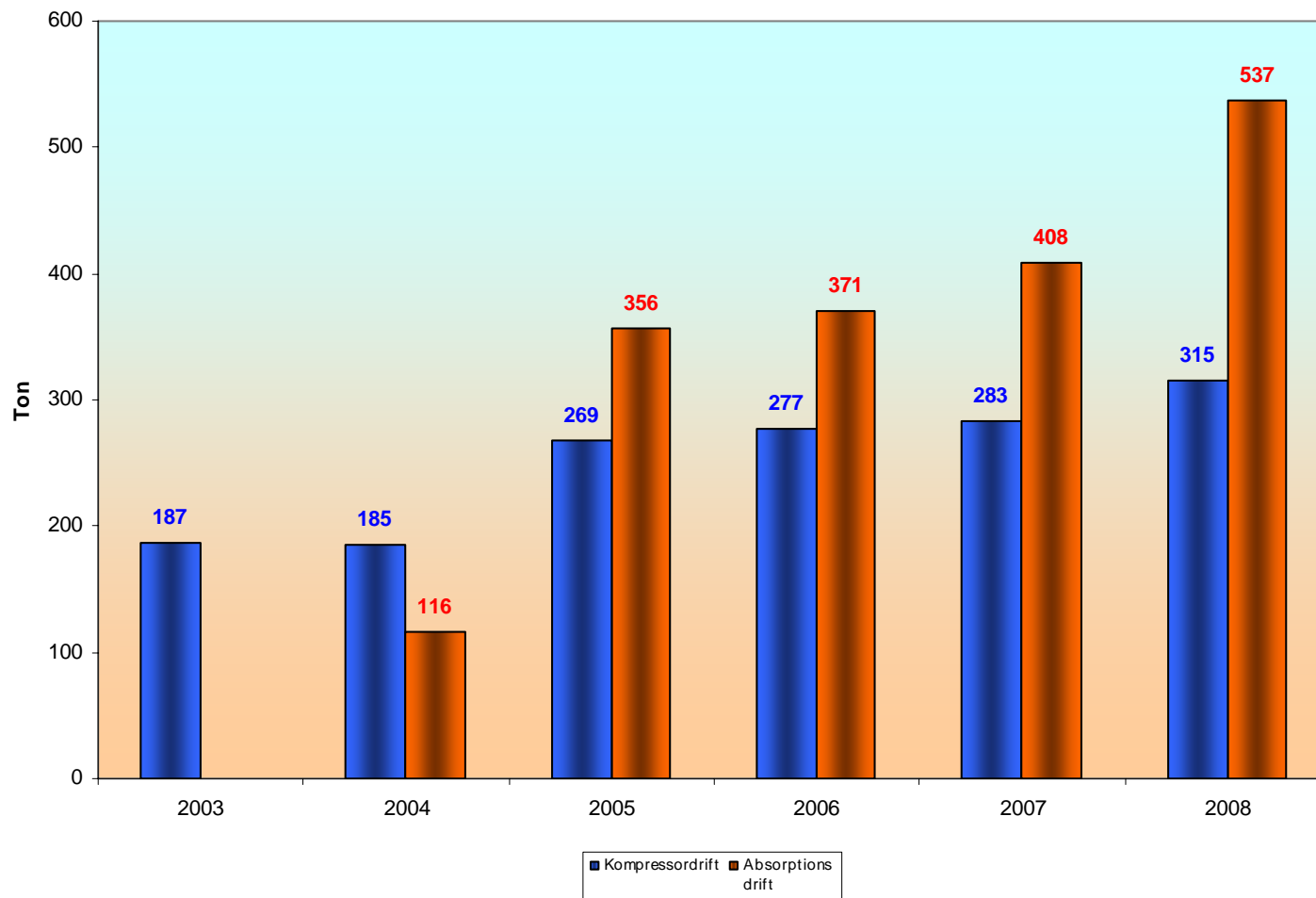
Udgifter Kølemaskiner drift
Kr. 164.058
Kr. 168.474
Kr. 200.419
Kr. 199.618
Kr. 319.617
Kr. 293.586

Udgifter Absorption drift
Kr. 26.536
Kr. 113.010
Kr. 133.767
Kr. 146.092
Kr. 186.956

Årlig besparelse
Kr. 135.902
Kr. 67.135
Kr. 40.094
Kr. 138.728
Kr. 56.341



CO₂ Emission



<i>Kølemaskindrift</i>	
	187
	185
	269
	277
	283
	315

<i>Absorberdrift</i>	
	116
	356
	371
	408
	537